

**FIRST ANNOUNCEMENT**

ORGANISED BY:

MANAGED BY:



# <sup>TH</sup> **15 NAT'SEM** **2020**

**13-15 JULY 2020**

**PULLMAN MIRI WATERFRONT, MIRI, SARAWAK**

**ADDRESSING CHALLENGES  
IN PLANTATION MANAGEMENT**





## THEME

**ADDRESSING CHALLENGES  
IN PLANTATION MANAGEMENT**

## ORGANISER

### THE INCORPORATED SOCIETY OF PLANTERS

Suite 3A01, Level 3A, PJ Tower

Amcorp Trade Centre

18 Persiaran Barat

46050 Petaling Jaya, Selangor, Malaysia

Tel : +603-7955 5561

Mobile Phone : +60 11-1638 3266 (WhatsApp Only)

Fax : +603-7956 6898

Email : [isphq@isp.org.my](mailto:isphq@isp.org.my)

Website : <http://isp.org.my>

Facebook : <http://www.facebook.com/isphq>

## DATE

**13-15 JULY 2020**

## VENUE

### PULLMAN MIRI WATERFRONT, MIRI, SARAWAK

Lot 1347, Miri Waterfront Commercial Centre,

98000 Miri, Sarawak, Malaysia

Tel : +6085323888

Fax : (+60)85/323999

Email : [h9731-re@accor.com](mailto:h9731-re@accor.com) (Room Booking)

: [h9731-fo1@accor.com](mailto:h9731-fo1@accor.com) (Front Desk/ General Enquiries)

Website : <http://www.pullmanhotels.com>

## SUPPORTERS



**M P O C**



BY SARAWAK CONVENTION BUREAU



**M P O B**



**KEMENTERIAN INDUSTRI UTAMA**



**MPOA**  
PERSATUAN MINYAK SAWIT  
MALAYSIA

# The Seminar

**T**he plantation industry is facing many challenges locally and globally to increase productivity, income and in finding effective solutions to plantation operations, conservation and protection of the environment and many more to stay competitive in the Industry.

Therefore, in order to address some of these issues, The Incorporated Society of Planters (ISP) is organising its 15th ISP National Seminar 2020 (NATSEM 2020). The theme, "Addressing Challenges in Plantation Management" will set the direction for this thought-provoking discussion, to be held from 13 - 15 July 2020 in Pullman Miri Waterfront, Miri, Sarawak.

This year's theme will highlight and address on diverse issues related to plantation management, that must not be considered independent of each other but requires an integrated approach to optimise improvement. These issues include crop ecology and cropping systems, pest and diseases managements, land and soil management, mechanisation, sustainable agriculture, manpower, climate change, food safety and waste management. The seminar will be navigated through 4 sessions of different topics; Resource management (Session 1), Crop management (Session 2), Quality control and waste management (Session 3) and Human resource management (Session 4). We have lined-up 10 speakers who are experts in their respective field to share their thoughts on the issues during the two days seminar.

This year's seminar will benefit all those who seek to continuously improve and strengthen the plantation sector. When challenges within these criteria are answered, there will be improvement in terms of productivity for any tree crops. Throughout the two-day seminar with more than 800 participants expected, a trade exhibition with 45 booths will be held for participants to explore equipments and products related to the plantation industry. We hope, with your support, the seminar and exhibition will build a network among industry players and strategically create an opportunity or platform for exchange of ideas and thoughts.

We've learned that addressing challenges in plantation management will be the answer to improve yield and productivity, produce safe and high quality products and create more income in the plantation sector in view of the limited land for crop cultivation. We are confident that this seminar can identify the trends, issues and on-going challenges that must be overcome immediately to reroute the industry back to its glory days.

**We bid you all a warm welcome**

# Seminar Programme

SUNDAY / 12 JULY 2020	
1500 - 1800	<b>Registration of Seminar Participants</b>
1600 - 1800	<b>Annual General Meeting (ISP Members only)</b> Venue: Pullman Miri Waterfront, Miri, Sarawak
MONDAY / 13 JULY 2020	
0700 - 0830	<b>Registration of Seminar Participants</b>
	<b>OPENING CEREMONY</b>
0830 - 0850	<b>Welcome Address</b> <b>YBhg Datuk Hj. Daud Hj. Amatzin, PJN, AISP, FISP</b> <i>Chairman, The Incorporated Society of Planters</i>
0850 - 0920	<b>Official Opening of the Seminar</b> <b>Guest of Honour: YAB Datuk Patinggi (Dr) Abang Haji Abdul Rahman Zohari Bin Tun Datuk Abang Haji Openg (Invited)</b> <i>Chief Minister of Sarawak</i>
0920 - 1020	<b>Refreshments and Tour of Exhibition</b>
	<b>KEYNOTE ADDRESS</b> Chairperson: M R Chandran, FISP <i>The Incorporated Society of Planters</i>
1020 - 1100 KN	<b>Addressing Challenges in Plantation Management</b> Simon Siburat <i>Wilmar International Limited</i>
	<b>SESSION I - RESOURCE MANAGEMENT</b> Chairperson: Charles Chow Kok Cheng, AISP <i>Tradewinds Plantation Berhad</i>
1100 - 1130 P1	<b>Soils and Nutrient Management</b> Joshua Mathews <i>IOI Group</i>
1130 - 1200 P2	<b>Advancement in Planting Materials in the Future</b> Dr Rajanaidu Nookiah <i>Academy of Sciences</i>
1200 - 1230 P3	<b>Land Use Changes: Sarawak - A Case Study</b> Rita Insol <i>Sarawak Dayak Oil Palm Planters Association (DOPPA)</i>
1230 - 1400	<b>Lunch and Tour Exhibition</b>
1400 - 1440	<b>Discussions</b>
	<b>SESSION II - CROP MANAGEMENT</b> Chairperson: YBhg Dato' Dr. Mohamad Hashim Ahmad Tajudin, FISP <i>The Incorporated Society of Planters</i>
1440 - 1520 LP1	<b>Impact of Climate Change</b> Professor Sayed Azam-Ali <i>Crops For the Future</i>
1520 - 1550 P4	<b>Pests and Diseases Management</b> Su Chong Ming <i>Sarawak Oil Palm Berhad</i>
1550 - 1610	<b>Discussions</b>
1610	<b>Refreshments and Tour of Exhibition</b>
1930 - 2230	<b>SEMINAR DINNER 2020</b> <b>Guest of Honour: YAB Datuk Patinggi (Dr) Abang Haji Abdul Rahman Zohari Bin Tun Datuk Abang Haji Openg (Invited)</b> <i>Chief Minister of Sarawak</i>



# Seminar Programme

**TUESDAY / 14 JULY 2020**

	<b>SESSION III - QUALITY CONTROL AND WASTE MANAGEMENT</b> Chairperson: Mahbob Abdullah, FISP (TBC)
0800 - 0840 LP2	<b>Quality Control and Food Safety Management</b> Dr Muhammad Mohan Oasis Revenue Sdn Bhd
0840 - 0910 P5	<b>Waste Management</b> Syed Mahdhar Syed Hussain FGV Holdings Berhad
0910 - 0930	<i>Discussions</i>
0930 - 1100	<b>Refreshments and Tour of Exhibition</b>
	<b>SESSION IV - HUMAN RESOURCE MANAGEMENT</b> Chairperson: Paul Wong Hee Kwong (TBC) Sarawak Oil Palms Berhad
1100 - 1130 P6	<b>Addressing Manpower Requirements</b> Malaysian Palm Oil Board Azman Ismail
1130 - 1200 P7	<b>Mechanisation in Oil Palm Plantations-Achievements and Challenges</b> R Thayaparakanthan Sime Darby Plantation Sdn Bhd
1200 - 1220	<i>Discussions</i>
1220 - 1400	<b>Lunch and Tour Exhibition</b>
1400 - 1600	<b>PANEL DISCUSSION</b> Title: <b>THE WAY FORWARD FOR THE PLANTATION INDUSTRIES</b> Moderator: Hollis Awell, FISP, <i>The Incorporated Society of Planters</i> <b>Panel Members</b> 1. Napoleon Anak Royal Ningkos, <i>The Incorporated Society of Planters</i> 2. R. Thayaparakanthan, <i>Sime Darby Plantation Sdn Bhd</i> 3. Syed Mahdhar Syed Hussain, <i>FGV Holdings Berhad (TBC)</i> 4. Professor Sayed Azam-Ali, <i>Crops For the Future (TBC)</i> 5. Dr. Muhammad Mohan, <i>Oasis Revenue Sdn Bhd</i>
1600 - 1615	<b>Closing / Vote of Thanks</b> <b>Haji Mohamad Fadzil Hitam</b> <i>Vice-Chairman, The Incorporated Society of Planters /</i> <i>Chairman, Main Organising Committee of NATSEM 2020</i>
1615	<b>Refreshments and Tour of Exhibition</b>
1930 - 2230	<b>POST SEMINAR TALK (TBC)</b>

**WEDNESDAY / 15 JULY 2020**

0700 - 1700	<b>POST SEMINAR TOURS</b> <i>(For details, please refer to pages 9-10)</i> 1. Tour A: Full Day Miri City Tour + E-Mart Tudan + Piasau Nature Reserve 2. Tour B: Full Day Niah National Park + Iban Longhouse + Tusan Beach 3. Tour C: Full Day Brunei Heritage Tour 4. Tour D: 3D2N Mulu 4 Show caves (Mulu Marriott Resort & Spa-Full Board)
-------------	---

Disclaimer:

The Organiser reserves the right to make changes to the programmes without prior notice whether in terms of papers, speakers, chairperson, schedule or any other aspects



**ADDRESSING CHALLENGES  
IN PLANTATION MANAGEMENT**

# 15th NATSEM 2020



## WHO SHOULD ATTEND?

The 15th NATSEM 2020 is of direct relevance to all involved in the plantation industry especially:

- Chief Executive Officers, Directors, Managers, Executives, Cadets and other professionals from the plantation industry.
- Executives from downstream and related industries: agro chemical companies, machinery manufacturers, suppliers and traders.
- Policy makers, researchers, academicians, economists and consultants.

The Seminar will be especially useful for networking with your peers in the plantation industry while exchanging views and new ideas.



## SEMINAR REGISTRATION FEES

CATEGORY	EARLY BIRD FEE (BY 31 MARCH 2020)		NORMAL FEE		ONSITE REGISTRATION (WITH FULL PAYMENT)	
	RM	USD	RM	USD	RM	USD
Member	750	180	850	200	1,250	295
Non-member	1,050	250	1,150	270	1,650	390
College/University Undergraduates	500	120	500	120	850	200

The registration fee covers only Seminar materials, refreshments and lunches.

**\* Seminar fee inclusive of 6% Sales & Service Tax (SST) for Malaysians only.**



## SEMINAR DINNER

Will be held on Monday 13 July 2020 at 7:30 p.m until 10:30 p.m. Spouses and guests of participants are welcome to attend. Dinner charges are as follows: -

- |  |    |       |           |
|--|----|-------|-----------|
| • Registered Participant/ Guests/ Spouse | RM | 150   | (USD 40)  |
| • Corporate Table (10 seats)             | RM | 2,000 | (USD 500) |
| • VIP Table (8 seats)                    | RM | 2,500 | (USD 625) |



## POST SEMINAR TOURS

Field tours will be conducted on Wednesday, 15 July 2020. Participants will be accepted on a first-come, first served basis due to limited capacity.

TOUR	FEE /PAX	
	RM	USD
Tour A: Full Day Miri City Tour + E-Mart Tudan + Piasau Nature Reserve	189	48
Tour B: Full Day Niah National Park + Iban Longhouse + Tusan Beach	219	55
Tour C: Full Day Brunei Heritage Tour	319	80
Tour D: 3D2N Mulu 4 Show caves (Mulu Marriott Resort & Spa-Full Board) Malaysian	949	238
Tour D: 3D2N Mulu 4 Show caves (Mulu Marriott Resort & Spa-Full Board) Non-Malaysian	979	245

**\* All rates based on minimum 20 pax per tour**



**ADDRESSING CHALLENGES  
IN PLANTATION MANAGEMENT**



# 15th NATSEM 2020



## EXHIBITION

An exhibition featuring agro-chemicals, fertilisers, planting materials, service providers, farm machineries and mechanisation technologies related to the oil palm industry and other plantation crops will be held. The exhibits will be on display on Monday and Tuesday, 13 & 14 July 2020.

Booth Fees: 3m (D) x 3m (W) Booths:

Premium RM 12,000

Superior RM 8,000

Standard RM 6,000



## PAYMENT OF FEES AND CANCELLATION

The registration must be with appropriate payment in Ringgit Malaysia (RM) and made payable by the following method:

- Bank Draft
- Credit card (Mastercard/Visa only)
- Cheque
- Telegraphic transfer
- Payment on site **(For limited WALK-IN participants)**

### BANK INFORMATION

Beneficiary	: ISP MANAGEMENT (M) SDN BHD
Bank Beneficiary	: AMBANK ISLAMIC BERHAD/AMBANK (M) BERHAD G-01, Block A, Menara PJ No 18, Persiaran Barat, 46050 Petaling Jaya, Selangor
Current Account	: <b>888-101-596-8511</b>
Swift Code	: ARBKMYKL

**\*\*All bank and credit card charges are to be borne by participants.**



## TERMS AND CONDITIONS

- Separate charges are applicable for SEMINAR DINNER and POST SEMINAR TOURS.
- Request for cancellation must be made in writing.
- 100% refund will be made for written cancellation received by 12 June 2020. Refund will be issued after the Seminar.
- NO REFUND will be given for cancellation received after 15 June 2020. However, replacement is acceptable and please forward the details of replacement name to [conference@isp.org.my](mailto:conference@isp.org.my).
- The Registration Form serves as the official invoice.
- All membership subscription should be paid latest by 31 March 2020 to entitle for members' rate for NATSEM 2020, or else, non-members' rate will be applied.
- **ALL REGISTRATION MUST BE SUBMITTED TOGETHER WITH FULL PAYMENT BEFORE 7 JULY 2020.**

Participants are encouraged to register via ISP website: [www.isp.org.my](http://www.isp.org.my)

**\*\*The Seminar registration must be done manually for a group registration of 10 participants or more by faxing/emailing the Registration Form to the Secretariat at 603- 7956 6898 or [conference@isp.org.my](mailto:conference@isp.org.my) and shall be eligible for 10% discount**

# General Conditions

- It is expressly agreed that the members of the Organising Committee of NATSEM 2020 and their legal representatives, Directors and officers/employees and their agents shall not be liable for any loss, injury or damage of any kind whatsoever suffered directly or indirectly by the person, possessions or property of any Seminar participant or other person during or in connection with the events on the programmes or any other activities of the NATSEM 2020, for any reason whatsoever unless it be proven that the specific damage was due to wilful intent or gross negligence on the part of the Organising Committee or any of the aforementioned persons; in such case, liability shall be limited to the loss or damage foreseeable at the time the individual contract was made.
- It is agreed that the Organising Committee of NATSEM 2020 and their agents and officers reserve the right to cancel at any time one or all the programmes or other activities if this should appear necessary as result of events which are beyond their control or which they cannot reasonably be expected to influence or for which they are not responsible; such events shall include but are not limited to force majeure, government or other official regulations, natural disasters, strikes of any kind whatsoever., civil disorders or riots, obstruction or curtailment of transport and/or transmission facilities, insurrection or other crisis, or any other unforeseen occurrence. The decisions regarding the necessity for such cancellations shall be taken by the Organising Committee of the NATSEM 2020 and their agents at their sole discretion and shall be final.
- The Organisers reserve the right to make changes to the programmes without prior notice whether in terms of papers, speakers, chairmen, schedules or any other aspects.
- The official language will be English.



# Post Seminar Tours

## TOUR A: FULL DAY MIRI CITY TOUR + E-MART TUDAN + PIASAU NATURE RESERVE (8 hours)

0900hrs, meet and greet by our friendly local tour guide. Proceed for full day **Miri City Tour** with tour to **Malaysia's 1st Oil Well** – The Grand Old Lady located at Canada Hill. **Petroleum Museum Miri** (closed on Mondays or Public Holidays) – with various exhibits that shows us the history of the petroleum industry in Sarawak. **Handicraft Heritage Centre** – all sort of unique and handmade art craft, T-shirts, bead work and many more. **Local Product Shop** (Kek Lapis & Pepper Factory). Transfer to local restaurant for lunch. After lunch, proceed to **Piasau Nature Reserve Park** was gazette on 31st Dec 2013 as part of efforts to protect the reverse under the “**Bring Back the Rainforest**” initiative and to promote Miri as a “**Green City**”. It is located in Piasau, about 5km north of Miri city centre. PNR is best known for its small population of Oriental Pied Hornbills, in which sightings spurred intense public interest. Visit the PNR centre to view a small exhibition R videos of conservation efforts by SFC. You will also get to see descriptions of various flora & fauna identified in the forest reserve. Next, proceed to **E-mart Tudan**– the native market, where a variety of stalls sell various tropical fruits, vegetables, jungle products, Sarawak famous Ikan Terubokmasin, Bario rice, Bario salt and many others.

Transfer to **Coco Cabana** – The latest landmark of Miri which houses the 25 meters high seahorse light house. Besides that, you can find variety of local food stalls (only open from late evening). Enjoy the local food while having a magnificent view of the South China Sea there can be a very good experience. Return to Hotel. Tour End.

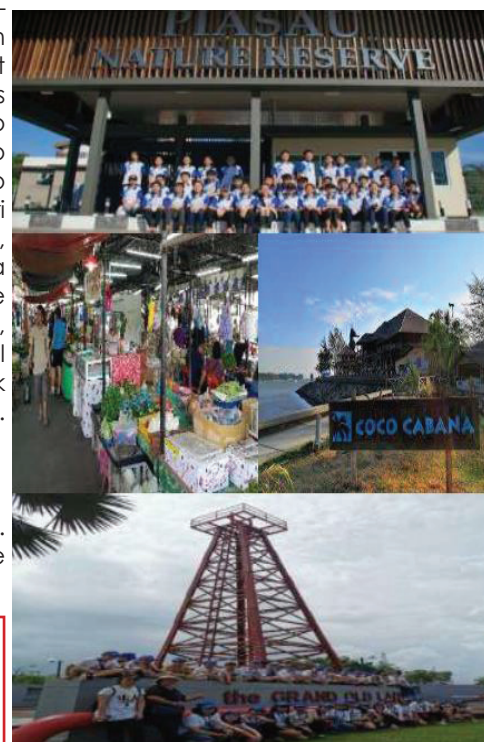
### Inclusive of: -

1. Entrance fee (if applicable)
2. Transportation
3. English speaking guide
4. 1 x 500ML mineral water/per pax/day
5. 1 Lunch (Lunch)

### Exclusive of: -

1. Air ticket
2. Accommodation
3. Travel insurance
4. Personal expenses
5. Items that are not mention
6. Recommended Guide & Driver tipping RM10/pax/day

Rate based on min. 20 pax  
**RM 189/Pax**



## TOUR B: FULL DAY NIAH NATIONAL PARK + IBAN LONGHOUSE + TUSAN BEACH (10 hours)

0800hrs, meet and greet by our friendly local tour guide. Proceed to Niah National Park. It takes about 1 ½ hours' drive to national park. Upon arrival Park headquarters, register and have a brief study of the park **Interpretation centre**. Then, take a short boat ride to cross the river to visit Interpretation Centre. Next, proceed on 3 KM plank walk for about 45 minutes to **Iban Longhouse** for Ethnic lunch. Ibans are the single largest tribe in Sarawak and they traditionally live in longhouses, which are actually a number of rooms linked together but sharing a common 'ruai' – a verandah where traditional ceremonies are performed in the olden days. The ibans are the famed headhunters of Borneo and in some older longhouses, some of the skulls are still seen hanging along the ruai.

After lunch, proceed to the **Traders Cave**, **The Great Cave** and **Moon Cave**. Niah Cave is famous for its edible bird's nest found high-up in the cave about 300 ft from the ground. You will have a chance to see the birds nest collector harvest the nest if in season. Proceed Return journey on the same plank walk to Niah National Park HQ. Next, proceed to **Tusan Beach** is famous for the white and clean sandy beach with a gentle slope and fascinating South China Sea and sunset view. Among the attraction in Tusan Beach is the rock formation which resembles that of a horse drinking water. After Tusan beach transfer back to hotel. Tour End

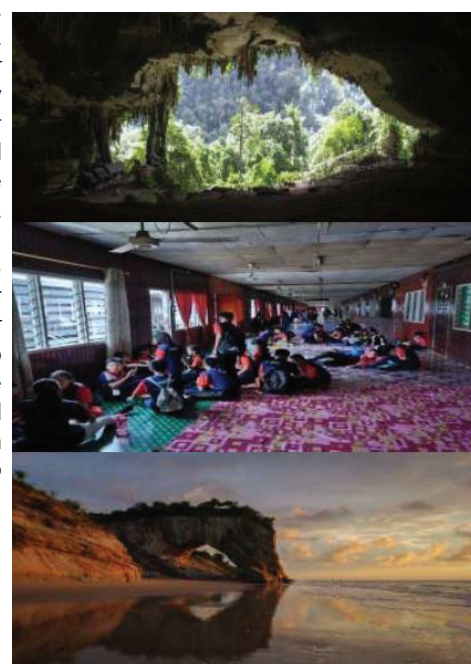
### Inclusive of: -

1. Entrance fee (if applicable)
2. Transportation
3. English speaking guide
4. 1 x 500ML mineral water/per pax/day
5. 1 Lunch (Ethnic Lunch)

### Exclusive of: -

1. Air ticket
2. Accommodation
3. Travel insurance
4. Personal expenses
5. Items that are not mention
6. Recommended Guide & Driver tipping RM10/pax/day

Rate based on min. 20 pax  
**RM 219/Pax**





# Post Seminar Tours

## TOUR C: FULL DAY BRUNEI HERITAGE TOUR (8-9 hours)

0800hrs, meet and greet by our friendly local tour guide. Proceed for **Brunei Darussalam, Bandar Seri Begawan**. It takes about 2 ½ hours' drive to immigration clearance at Sarawak / Brunei Border Sg.7. Tour include photo stop at **The Billionth Barrel Monument** in the town of Seria. **The Empire Hotel & Country Club** – renowned for its luxury, White Marble, Gold accents, Luminous and breathtaking architecture. With a hotel of such sublime luxury, you would experience breathtaking panoramic views. Upon arrival at **Bandar Seri Begawan** (capital city of Brunei) proceed for lunch at a local restaurant before visiting The **Royal Regalia** which houses of the Coronation & Silver Jubilee Chariot.

At Bandar Seri Begawan we will visit **Sultan Omar Ali Saifuddin Mosque** which is one of the most magnificent mosques in Southeast Asia and a replica of a 16<sup>th</sup> century royal barge that is moored in an adjoining lagoon, **Jame Asr Mosques** which is the Brunei's National Mosque and **Brunei Museum**. Photo stop at road side for **Kampung Ayer**, the “**Venice of the East**”. It is the world's largest water village with 30,000 people living in houses on stilts snaking along the banks of the Brunei River. Next, photo stop at outside **Istana Nurul Iman** – Sultan's Royal Palace. Return to Miri and transfer back to Hotel. Tour End.

### Inclusive of: -

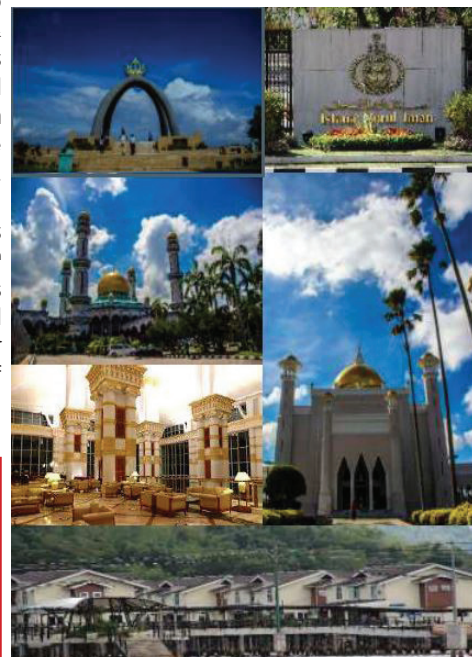
1. Entrance fee (if applicable)
2. Transportation
3. English speaking guide
4. 1 x 500ML mineral water/per pax/day
5. 1 Lunch (Lunch)

Special note: As a general rule, passports should have at least six months of validity when traveling internationally

### Exclusive of: -

1. Air ticket
2. Accommodation
3. Travel insurance
4. Personal expenses
5. Items that are not mention
6. Recommended Guide & Driver tipping RM10/pax/day

Rate based on min. 20 pax  
**RM 319/Pax**



## TOUR D: 3D2N MULU 4 SHOW CAVES (MULU MARRIOTT RESORT & SPA-FULL BOARD)

### DAY 01: ARRIVAL / MULU NATIONAL PARK / LANG'S & DEER CAVES / BAT EXODUS (L/D)

Upon arrival Mulu Airport, transfer to your choice of accommodation for check in. Afternoon, meet at resort lobby and transfer to **Mulu National Park** headquarters for registration. Lunch at Park café (*arranged by tour guide*). Proceed on plank walk for 3 KM to reach **Lang's Cave & Deer Cave**. After exploring the caves, proceed to bats observatory to observe bats flying out of caves entrance at late evening (*Only confined to fine weather*). Return journey on the same plank walk to park headquarters and transfer back to your accommodation. Dinner at resort.

### DAY 02: PENAN SETTLEMENT / WIND & CLEARWATER CAVES (B/L/D)

After breakfast transfers by longboat proceed to Batu Bungan - **Penan Settlement**, to observe the tribe lifestyle and to select handicrafts on display for sale at Penan Settlement for 15 -20 minutes. Continue journey by longboat to **2nd stop at Cave of the Winds** where you have to negotiate a long ramp and a few stairs and **Clearwater Cave** where the subterranean river emerges from the cliff face. Take 200 stairs to enter the cave to marvel at the *Monophilia Pendula* endemic to Mulu. Clearwater is one of the biggest cave systems in the world, measuring over 220km in length. Picnic lunch at Clearwater summer huts and later on you can enjoy swimming at Clearwater spring. Late afternoon return transfer by longboat to your accommodation then free and easy at own leisure. Dinner at resort.

- Swim wear
- Bring a spare plastic bag for wet items (in case you go swimming)

### DAY 03: DEPARTURE (B)

After breakfast. Free and easy. Check out and transfer to Mulu airport for flight back to Miri.

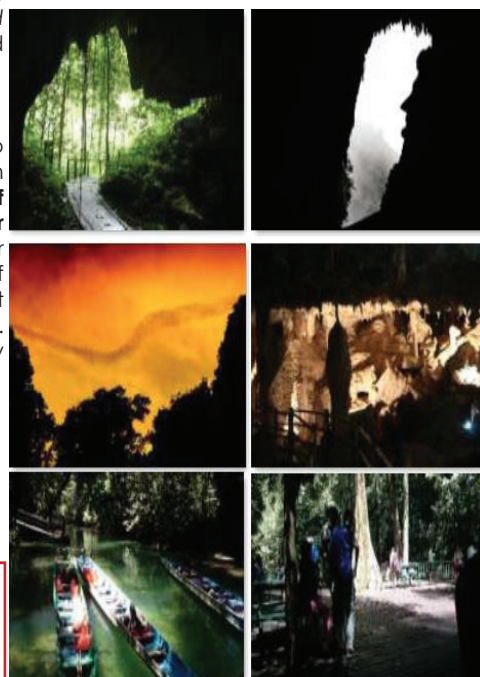
### Inclusive of: -

1. Land and airport transfer during tour
2. 2 nights stay at 5\* Mulu Marriott Resort & Spa
3. Entrance fees (any if applicable during tour)
4. Meals mentioned as per itinerary
5. Peak Season Surcharge

### Exclusive of: -

1. Air Ticket Domestic (MYY>MZV>MYY)
2. SST (Subject to government implications)
3. Personal expenses and travel insurance
4. Things not mentioned above
5. Recommended Guide and driver tipping RM10/day
6. Tourism Tax (for Non-Malaysian), rate is subject to RM10.00 nett per room, per night

Rate based on min. 20 pax  
**Malaysian: RM949/Pax**  
**Non-Malaysian: RM979/Pax**





# Seminar Registration

## PARTICIPANT INFORMATION

### DETAILS OF PARTICIPANT

Membership / Student No:   
 Title (Dato'/Dr/Prof etc):   
 Name:   
 IC/ Passport No:   
 Tel:  Email:   
 Name on Tag:

Nationality (Tick required)

Malaysian ☐ or non-Malaysian ☐

If Malaysian (Tick if Malaysian)

Sarawakian ☐ or non-Sarawakian ☐

Special Dietary Requirement (Tick if applicable)

Vegetarian ☐ Others

### DETAILS OF ORGANISATION

Company:   
 Contact Person (HR/ Training Manager):   
 Address:   
 Tel:  Fax:   
 Email:

## TERMS & CONDITIONS

- Request for cancellation must be made in writing.
- 100% refund will be made for written cancellation received by 12 June 2020. Refund will be issued after the Seminar.
- No refund will be given for cancellation received after 12 June 2020. However, replacement is acceptable and please forward the replacement name to conference@isp.org.my.
- The Registration Form serves as the official in-voice.
- All membership subscription should be paid latest by 31 March 2020 to entitle for members' rate for NATSEM 2020, or else, non-members' rate will be applied.
- All registrations must come with payment before the event.
- Registration must be done by faxing/emailing the registration form to the Secretariat at 603-7956 6898

## FEES

### SEMINAR FEE (Early Bird - by 31 March 2020)

- |   |    |       |                          |
|---|----|-------|--------------------------|
| • Member                                | RM | 750   | <input type="checkbox"/> |
| • Non-member                            | RM | 1,050 | <input type="checkbox"/> |
| • College / University / Undergraduates | RM | 500   | <input type="checkbox"/> |

*\*10% discount for bulk bookings of more than 10 participants  
 \*Fees are inclusive of 6% Sales & Service Tax (SST) (for Malaysians only)*

### SEMINAR DINNER

- |   |    |       |                          |
|---|----|-------|--------------------------|
| • Registered Participant /guests/spouse | RM | 150   | <input type="checkbox"/> |
| • Corporate Table (10 seats)            | RM | 2,000 | <input type="checkbox"/> |
| • VIP Table (8 seat)                    | RM | 2,500 | <input type="checkbox"/> |

### POST SEMINAR TOURS

- |   |    |     |                          |
|---|----|-----|--------------------------|
| • TOUR A- Miri City Tour                  | RM | 189 | <input type="checkbox"/> |
| • TOUR B- Niah National Park Tour         | RM | 219 | <input type="checkbox"/> |
| • TOUR C- Brunei Tour                     | RM | 319 | <input type="checkbox"/> |
| • TOUR D- 4 Mulu Caves Tour               | RM | 949 | <input type="checkbox"/> |
| • TOUR D- 4 Mulu Caves Tour Non-Malaysian | RM | 979 | <input type="checkbox"/> |

TOTAL (Tick Required) ☐

## PAYMENT METHOD

Please choose your payment method

☐ Cheque No  ☐ Cash (Walk in only)

☐ Telegraphic Transfer/Bank in  
 (Please provide proof of Payments)

Credit Card ☐ Visa ☐ Mastercard

Card No:

Cardholder's Name:

Bank's Name:

Expiry Date:  /  (mm/yy)

Signature:

Date:   
*\*2% to cover bank commission for all credit card payments will be charged.*

## BANK DETAILS

Beneficiary :ISP MANAGEMENT (M) SDN BHD

Bank Beneficiary :AMBANK ISLAMIC BERHAD  
 AMBANK (M) BERHAD,  
 G-01 Block A, Menara PJ,  
 No 18, Persiaran Barat,  
 46050 Petaling Jaya Selangor

Bank Account :888-101-596-8511

Swift Code No :ARBKMYKL

*\*All bank charges to be borne by participant.*

## Enquiry & Registration

For enquiry & registration contact:

Ms Siti Nurnabilah/Ms Izyan

Mailing Address: ISP MANAGEMENT (M) SDN BHD  
 PO Box 10262, 50708 Kuala Lumpur

Telephone : +603 7955 5561

Mobile Phone : +60 11-1638 3266 (WhatsApp Only)

Email : conference@isp.org.my

# Advertisement



## Advertisement In Seminar Souvenir Programme

- Size – 30 cm x 21 cm (A4 size)
- All advertisements to be given in PDF or AI format.
- All advertising materials must be submitted by 16th June 2020.

### ADVERTISEMENT RATES

1.	Back Cover	RM 3,180	X
2.	Inside front cover	RM 2,650	X
3.	Inside back cover	RM 2,120	
4.	Full page (full colour)	RM 1,272	
5.	Half page (full colour)	RM 848	
6.	Full page (black & white)	RM 954	
7.	Half page (black & white)	RM 530	
8.	2 paged bound inserts (front and back) (1,200 copies of the inserts to be provided by the advertiser)	RM 848	
9.	2 paged loose inserts (front and back) (1,000 copies of the inserts to be provided by the advertiser) to be placed in the Seminar bag.	RM 742	

(Tick Required)

**\*All items are inclusive of 6% Sales & Service Tax (SST)**

### PAYMENT METHOD

We wish to advertise in the Seminar souvenir programme as indicated above.

- ☐ Cheque No:..... for RM.....
- ☐ Telegraphic Transfer/Bank In  
(Please provide proof of payment)

Credit Card ☐ Visa ☐ Mastercard

Card No: .....  
Cardholder's Name: .....  
Bank's Name: .....  
Expiry Date: ..... / ..... (mm/yy)

Signature: ..... Date: .....

\*2% to cover bank commission for all credit card payments will be charged.

### ENQUIRY

For enquiry & advertisement booking contact:  
Ms Malar (conference@isp.org.my)  
Address :ISP Management (M) Sdn Bhd  
PO Box 10262, 50708 Kuala Lumpur  
Telephone :+603 7955 5561  
Mobile Phone :+60 11-1638 3266 (WhatsApp Only)  
Fax :+603 7956 6898

### BANK DETAILS

Beneficiary : ISP MANAGEMENT (M) SDN BHD  
Bank Beneficiary : AMBANK ISLAMIC BERHAD/AMBANK (M) BERHAD  
G-01 Block A, Menara PJ, No 18, Persiaran Barat, 46050 Petaling Jaya, Selangor  
Bank Account : 888-101-596-8511  
Swift Code No : ARBKMYKL

\*All bank charges to be borne by the advertiser.

### ORGANISATION DETAILS

Contact person : .....  
Designation : .....  
Company Name : .....  
Company Address:.....

Telephone : .....  
Fax : .....  
E-mail : .....

.....  
Signature Date

Company Rubber Stamp :



# Exhibition Registration

## EXHIBITOR REGISTRATION FORM

### EXHIBITOR'S INFORMATION

Company Name:

Address:

Tel:  Fax:

Company Email:

Website:

### MAIN CONTACT PERSON

Name (Mr/Mrs/Ms):

Designation:

Direct Line:  Fax:

Email:

(Signature & Company stamp)

Date:

## EXHIBITION DETAILS

### EXHIBITION INFORMATION

ITEM(S) TO BE EXHIBITED:

WE WILL REQUIRE:  BOOTH (S).

BOOTH TYPE REQUIRED:

BOOTH TYPE	RM	TOTAL BOOTHS
PREMIUM (PR)	12,000	5
SUPERIOR (SU)	8,000	26
STANDARD (ST)	6,000	10

**\*The organiser reserves the right to accept the registration made and to allocate the booth position.**

**\*Special booths are allocated for our Platinum, Gold and Silver category Sponsors. (For details, please refer to pages 15-17)**

## PAYMENT DETAILS (Tick where appropriate)

☐ Cheque No:

☐ Cheque Amount:

☐ Telegraphic Transfer/Bank in (Tick Required)

Beneficiary : ISP MANAGEMENT (M) SDN BHD  
 Bank Beneficiary: AMBANK ISLAMIC BERHAD/  
 AMBANK(M) BERHAD  
 G-01 Block A, Menara PJ,  
 No 18, Persiaran Barat  
 46050 Petaling Jaya, Selangor

Bank Account : **888-101-596-8511**  
 Swift Code No : ARBKMYYL

*\*Please send a copy of the bank-in slip for tracing of payment.*  
*\*All bank charges to be borne by the exhibitor.*

## OTHER INFORMATION

### COMPLIMENTARY FOR EVERY BOOTH TAKEN

- Two (2) sets of Seminar materials.
- Lunch and refreshments for two (2).
- Two (2) dinner cards.

### BOOTH SPECIFICATIONS

- Standard shell scheme (3m x 3m)
- Partition – Rear & dividing walls of 2500mm high using white powder coated aluminium system.
- Graphics – Company's name and booth number in self-adhesive lettering.
- Flooring – 3.6mm plywood underlay and needle punch carpet.
- Electrical – 2 units fluorescent tubes & 2 units 13 amp power point.
- Furniture – 1 Information counter & 2 folding chairs.
- Optional Facilities – Exhibitors can hire optional facilities from the appointed official contractor at their own expense.

## TERMS & CONDITIONS

1. Booths are limited and booking with payment is on a "first come first served" basis.
2. Any reservation for booth without full payment will not be listed for allocation of booth.
3. For cancellation, kindly send written notification to the secretariat. 50% refund will be given for cancellations received by 15 June 2020.
4. NO REFUND will be given for cancellations received after 15 June 2020.
5. The organisers shall not be held responsible for whatever cost incurred or damaged to the exhibits due to reasons beyond their control.

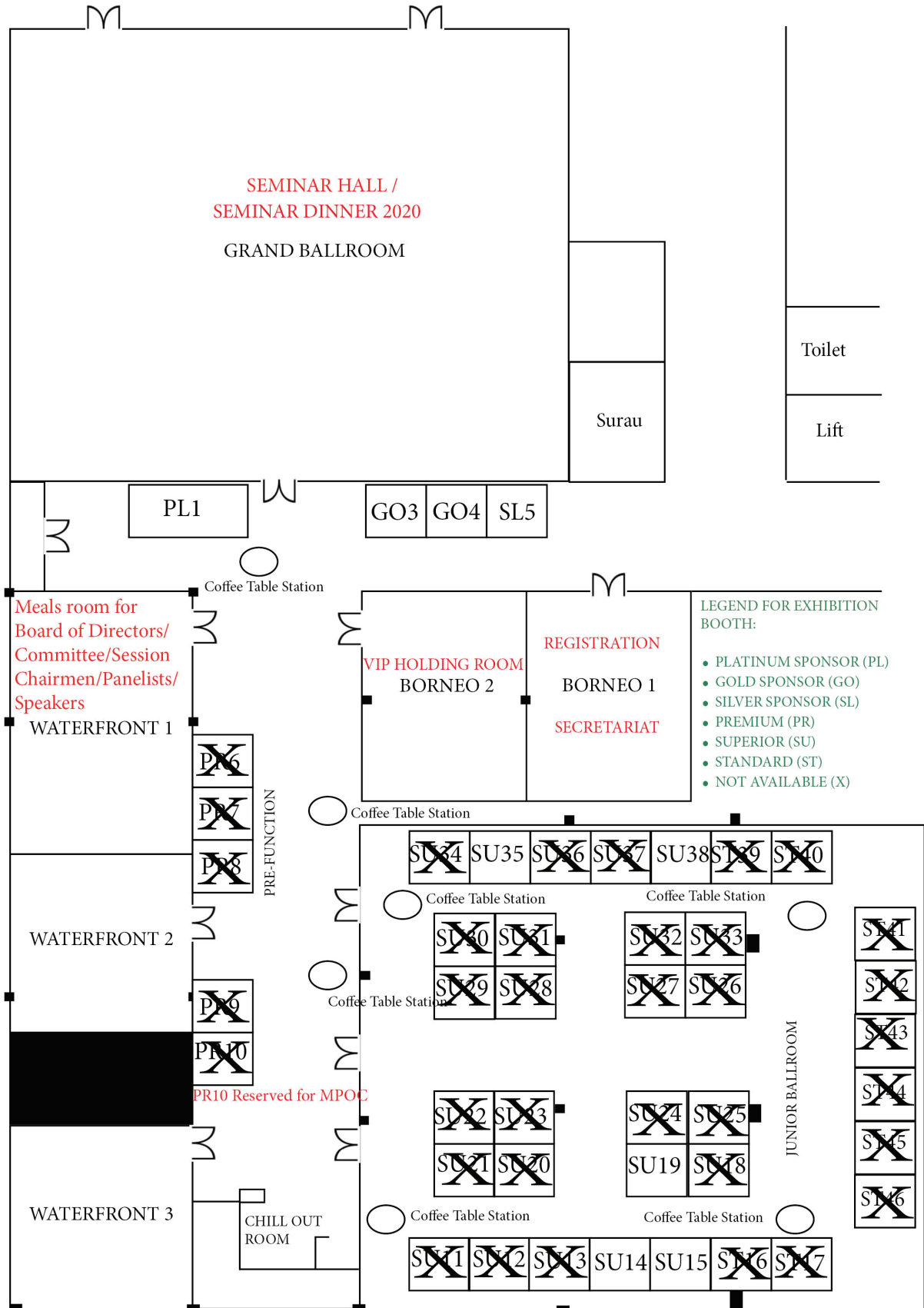
For Enquiry & booking contact: Ms Rajeswary (conference@isp.org.my)  
 Telephone: +603 7955 5561 | Fax: +603 7956 6898 | Mobile phone: +60 11-1638 3266 (WhatsApp Only)

# Exhibition Floor Plan

## 15th National Seminar 2020 (NATSEM 2020)

13-15 July 2020

# Pullman Miri Waterfront, Miri, Level 6





# Sponsorship

## SPONSORSHIP PACKAGES

The sponsorship packages are exclusively reserved for plantation and plantation-related industry's leading organisations. The sponsorship comprises the most attractive, desirable and effective promotional parameters of the NATSEM 2020. The Sponsor will be given the highest possible level of support and publicity from the NATSEM 2020 organising team. The parameters which constitute the sponsorship are only available as part of the package, thus ensuring exclusivity and its innate value.

Key opportunity: Receive unsurpassed recognition by having your company logo featured on all Seminar items chosen to be distributed to all delegates at NATSEM 2020.

### PLATINUM SPONSORSHIP (RM50,000)

#### Seminar Opportunities

The following attractive and unparalleled Seminar opportunities are exclusive to Platinum Sponsor and will provide wide exposure to all Seminar delegates.

- Keynote Video Loop
  - o Enthralls the delegates with 30-second commercial. Sponsor provides video.
- NATSEM 2020 signage
  - o Your company logo on signage throughout the Seminar.
- Venue Signage
  - o Your company logo included on banner.
- Seminar Bag Insert
  - o Grab the attention of all delegates by placing your company's literature in the Seminar bag distributed at registration.
  - o Delegate registrations – Four (4) complimentary delegates participation and Seminar Dinner.

#### Exhibition Hall Opportunities

The Platinum Sponsor will be provided with exhibition hall opportunities with exposure to both Seminar delegates and as well as Expo attendees.

- 3m x 3m Exhibition space in a premium location. **(LIMITED: ONE (1) SPACE ONLY)**
- Meeting Space
  - o A 3m x 3m private meeting place located near the exhibition hall.

#### Advertising Opportunities

The following advertising opportunities are exclusively provided for the Platinum Sponsor.

- Attendee Brochure
  - o Special premium logo placement in the official Seminar brochure
- ISP Website Posting
  - o Acknowledgement of your company's sponsorship at the ISP website
- On-Site Advertisement
  - o Premium placed, one full-page, full-colour advertisement in the NATSEM 2020 Seminar Papers. Sponsor to provide artwork.
- Press Announcement
  - o Your company name will be included in the pre-NATSEM 2020 press release as an exclusive Platinum Sponsor.

# Sponsorship

## GOLD SPONSORSHIP (RM40,000)

### Seminar Opportunities

The following attractive and unparalleled Seminar opportunities are exclusive to Gold Sponsor and will provide wide exposure to all Seminar delegates.

- Keynote Video Loop
  - o Enthralls the delegates with 30-second commercial. Sponsor provides video.
- NATSEM 2020 Signage
  - o Your company logo on signage throughout the Seminar.
- Venue Signage
  - o Your company logo included banner.
- Seminar Bag Insert
  - o Grab the attention of all delegates by placing your company's literature in the Seminar bag distributed at registration.
- Delegate Registrations
  - o Three (3) complimentary delegates participation and Seminar Dinner.

### Exhibition Hall Opportunities

The Gold Sponsor will be provided with exhibition hall opportunities with exposure to both Seminar delegates and as well as Expo attendees.

- 3m x 3m Exhibition Space in a premium location.  
**LIMITED: TWO (2) SPACES ONLY**

### Advertising Opportunities

The following advertising opportunities are exclusively provided for the Gold Sponsor.

- Attendee Brochure
  - o Special premium logo placement in the official Seminar brochure,
- ISP Website Posting
  - o Acknowledgement of your company's sponsorship at the ISP website.
- On-Site Advertisement
  - o Premium placed, one full-page, full-colour advertisement in the NATSEM 2020 Seminar Papers. Sponsor to provide artwork.
- Press Announcement
  - o Your company name will be included in the pre-NATSEM 2020 press release as an exclusive Gold Sponsor.

## SILVER SPONSORSHIP (RM30,000)

### Seminar Opportunities

The following attractive and unparalleled Seminar opportunities are exclusive to Silver Sponsor and will provide wide exposure to all Seminar delegates.

- NATSEM 2020 Signage
  - o Your company logo on signage throughout the Seminar.
- Venue Signage
  - o Your company logo included on banner.
- Seminar Bag Insert
  - o Grab the attention of all delegates by placing your company's literature in the Seminar bag distributed at registration.
- Delegate Registrations
  - o Two (2) complimentary delegates participation and Seminar Dinner.

### Exhibition Hall Opportunities

The Silver Sponsor will be provided with exhibition hall opportunities with exposure to both Seminar delegates and as well as Expo attendees.

- 3m x 3m Exhibition Space in a premium location.  
**LIMITED: ONE (1) SPACE ONLY**

### Advertising Opportunities

The following advertising opportunities are exclusively provided for the Silver Sponsor.

- Attendee Brochure
  - o Special premium logo placement in the official Seminar brochure,
- ISP Website Posting
  - o Acknowledgement of your company's sponsorship at the ISP website.
- On-Site Advertisement
  - o Premium placed, one full-page, full-colour advertisement in the NATSEM 2020 Seminar Papers. Sponsor to provide artwork.
- Press Announcement
  - o Your company name will be included in the pre-ISP NATSEM 2020 press release as an exclusive Silver Sponsor.



# Sponsorship

## SPONSORSHIP REGISTRATION

1.	Seminar Sponsorship Packages		
	• Platinum Sponsorship Package	<b>LIMITED: ONE (1) 3m x 3m EXHIBITION SPACE</b>	RM 50,000
	• Gold Sponsorship Package	<b>LIMITED: TWO (2) 3m x 3m EXHIBITION SPACES</b>	RM 40,000
	• Silver Sponsorship Package	<b>LIMITED: ONE (1) 3m x 3m EXHIBITION SPACE</b>	RM 30,000
2.	Seminar bags (800 bags @ RM 40 each)		RM 32,000
3.	Seminar Papers (printing 800 books @ RM 25 each)		RM 20,000
4.	Post Seminar Talk (200 persons @ RM100 per person)		RM 20,000
5.	Sponsorship: 4 Coffee/Tea break refreshments		RM 20,000
6.	Printing of flyers (6000 pieces @ RM 1.50 per piece)		RM 9,000
7.	Name Tags with plastic cover (1000 tags @ RM 6 each)		RM 6,000

(Tick Required)

## COMPANY DETAILS

Cheque No : ..... For RM .....

Company Name : .....

Address : .....

Contact Person : .....

Designation : ..... E-mail: .....

Telephone : ..... Fax : .....

Company Stamp:

.....  
Signature Date

## BANK DETAILS

Beneficiary : **ISP MANAGEMENT (M) SDN BHD**  
 Bank Beneficiary : AMBANK ISLAMIC BERHAD/  
 AMBANK (M) BERHAD  
 G-01 Block A, Menara PJ,  
 No 18, Persiaran Barat,  
 46050 Petaling Jaya, Selangor.

Bank Account : **888-101-596-8511**  
 Swift Code No : ARBKMYKL

## FOR ENQUIRY

Contact : **Ms Faiza**  
 Telephone : +603 7955 5561  
 Fax : +603 7956 6898  
 Mobile Phone : +60 11-1638 3266 (WhatsApp Only)  
 Email : conference@isp.org.my

# Hotel Reservation Form



## 15TH NATIONAL SEMINAR 2020 (NATSEM 2020)

**13 - 15 JULY 2020**

In conjunction with this prestigious event, Pullman Miri Waterfront is offering participants and exhibitors the following special rates  
(rates are applicable for pre/post stay up to 2 days prior and after conference days):

ROOM TYPE	ROOM RATE	
	Single (with one buffet breakfast)	Double (with two buffet breakfast)
Please tick (✓) on room category required	Please indicate room/s required	Please indicate room/s required
<input type="checkbox"/> SUPERIOR	<input type="checkbox"/> RM275.00+	<input type="checkbox"/> RM305.00+
<input type="checkbox"/> DELUXE	<input type="checkbox"/> RM300.00+	<input type="checkbox"/> RM335.00+
<input type="checkbox"/> EXECUTIVE DELUXE	<input type="checkbox"/> RM405.00+	<input type="checkbox"/> RM465.00+

**\*\* Rates are quoted in MYR**

**The above rates are subjected to 6% Sales & Service Tax and RM10.00nett per room per night Tourism Tax for Non Malaysian citizen**

### RESERVATIONS DETAILS

**For reservation please complete the form and fax or email to our Reservation Department**

**FAX: 6085-323 999 or email address: H9731-RE@accor.com**

### GUEST PARTICULARS

NAME _____		ORGANISATION _____	
ARRIVAL _____	FLIGHT NO. : _____	ETA _____	
DEPARTURE _____	FLIGHT NO. : _____	ETD _____	
E-MAIL _____	TEL/FAX NO.: _____		
PASSPORT NO & DATE OF BIRTH _____			
Name of your spouse/sharer if travelling together: _____			

### AIRPORT TRANSFER (Please tick)

Yes <input type="checkbox"/>	No <input type="checkbox"/>	
Miri International Airport to Pullman Miri Waterfront at RM75.00.00+ per way	Flight ETA: _____	
Pullman Miri Waterfront to Miri International Airport at RM75.00.00+ per way	Flight ETD: _____	

**Flight details are required for all limousine arrangements.**

### BILLING INSTRUCTION

Credit card details are required to guarantee room reservation and limousine arrangements

Name of Card Holder : _____	Card Holder Signature _____
Credit Card Number : _____	
Expiry Date : _____	
Credit Card Security No : _____	

\* For prepayment via bank transfer, please be informed of Pullman Miri Waterfront's account details :

United Overseas Bank, Acc No 603-301-197-8, Swift code: UOVBMYKL

\* **Reservation No. / Confirmed By :** \_\_\_\_\_

**Date :** \_\_\_\_\_

#### Terms & Conditions:

1. Check-in time is after 1400hrs and check-out time is 1200hrs.
2. Early check in or late check out is subject to room availability of the day.
3. Full charges for the duration of stay shall be charged to the credit card provided above for any cancellation or amendment of reservation after 30th June 2020.
4. Availability of each room category is subject to availability at the point of reservation.

We look forward in welcoming you to Pullman Miri Waterfront!



# Hotel Nearby

## LIST OF HOTELS NEARBY SEMINAR VENUE

1. **Ajang Hotel, (0.1km) ★★★★★**  
Ground Floor Lot 1326-1335 Miri Waterfront Commercial Center 98000 Miri Sarawak  
Tel : +6085 433173  
Email : bestrate@ajanghotel.com.my or reservations@ajanghotel.com.my  
Website : www.ajanghotel.com.my
2. **Kingwood Boutique Hotel Miri, (0.4km) ★★★★★**  
Lot 826, Jalan Yu Seng Utara, 98008 Miri, Sarawak.  
Tel : +6085 415888  
Email : hello@kingwoodmiri.com.my  
Website : bookings@kingwoodmiri.com.my
3. **Mega Hotel Miri, (0.4km) ★★★★★**  
907, Jalan Merbau, 98000 Miri, Sarawak  
Tel : +6085 432432  
Email : info@megahotel.com.my  
Website : https://www.megahotel.com.my
4. **Imperial Hotel Miri, (0.6km) ★★★★★**  
Lot 827, Jalan Pos, 98000 Miri, Sarawak, Malaysia.  
Tel : + 6085 431133  
Email : ihmyy@imperial.com.my  
Website : http://imperial.com.my
5. **Meritz Hotel Miri, (0.8km) ★★★★★**  
Bintang Megamall, 1657 Jalan Miri Pujut, Bintang Jaya, 98000 Miri, Sarawak  
Tel : +6085 417888  
Email : info@meritzhotel.com  
Website : www.meritzhotel.com.my
6. **Miri Marriott Resort & Spa Miri, (4.6km) ★★★★★**  
Jalan Temenggong Oyong Lawai Jau, Datuk Oyong Lawai, 98000 Miri, Sarawak  
Tel : +6085 421 121  
Email : mhrs.mymc.ays@marriottthotel.com  
Website : https://www.marriott.com
7. **Jinhold Hotel & Serviced Apartment Miri, (10km) ★★★★★**  
Lot 14735, Airport Commercial Centre, Jalan Airport, 98000 Miri, Sarawak  
Tel : +085-638 555  
Email : jhmiri.reservation@gmail.com  
Website : https://www.jinhold.com/
8. **Ano Hotel, (0.4km) ★★★★★**  
Lot 1755, Block 9, Off Jalan Permaisuri Miri Concession Land District, 98000 Miri Sarawak  
Tel : +6085 321166  
Email : anohotelmiri@yahoo.com  
Website : www.anohotel.com
9. **Nova Hotel Miri, (0.6km) ★★★★★**  
Lot 1016, Block 9, Jalan Brooke, Concession Land District, 98000 Miri  
Tel : +6085 322555  
Email : novahotelmiri@outlook.com  
Website : -
10. **Dynasty Hotel Miri, (1.1km) ★★★★★**  
Lot 683, Block 9, Jalan Pujut-Lutong, C.D.T. 20, 98009 Miri, Sarawak  
Tel : +6085 421111  
Email : dyhlmyy@dynastyhotelmiri.com.my  
Website : http://www.dynastyhotelmiri.com.my

